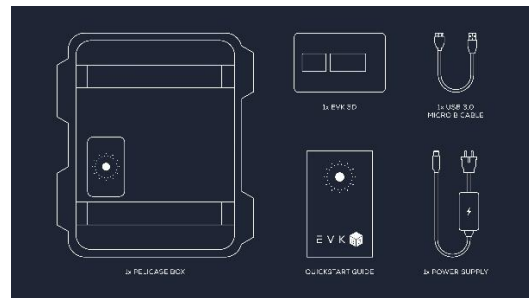




PROPHESÉE
META VISION FOR MACHINES



E V K 



Metavision® EVK3D is your perfect entry point to Structured Light depth sensing with Event-based Vision, by the inventors of the world's most advanced neuromorphic vision systems. This platform is compatible with Metavision® SDK software Suite. This evaluation kit features at its core the revolutionary SONY IMX636 TS HD Event-based Vision sensor, realized in collaboration between SONY and PROPHESEE as well as an addressable VCSEL array designed and manufactured by LUMENTUM. Available in three different versions for short, middle and long range applications, it enables users to evaluate fast depth measurement from a camera – structured light projector pair.

Welcome to our global inventors community, we can't wait to see what frontiers you will be pushing.

Version 1.0
Last change:
Product: EVK3D

REVISION HISTORY
Release date: 01/10/2023
Revision: 1.0
Description of changes: First published version

Event Based Sensor	Model		Sony IMX636TS jointly designed by Sony and Prophesee
	Resolution (H x V Pixels)		HD: 1280 x 720
	Sensor format		1 / 2.5"
	Pixel size		4.86um x 4.86um
Optics on Sensor	Reference		ACTM124IR5MP
	Manufacturer		Aico Electronics Limited
	Filter		940nm bandpass filter Center : 940nm, FWHM : 40nm
	Field of View with IMX636TS	Horizontal	94.4°
Vertical		65.8°	
Diagonal		135.7°	
Light Projector	Manufacturer		Lumentum
	Technology		VCSEL (Vertical Cavity Surface Emitting Laser)
	Wavelength		940nm
	Number of channels		8
	Number of Laser emitter per channel		16
	Diffraction optical element (DOE) pattern		3x3 non overlapping tiles
	Overall number of laser dots		1152 (= 8x16x3x3)
	Field of Illumination (FOI)		80°x 45°
	Maximum electrical Power per channel	Peak	6W
		Mean	19mW
Laser Class		Class 1	
Power supply	Manufacturer		GlobTek, Inc
	Manufacturer Reference		TR9CE5000LCP-N(R6B)
	Digi-Key Part Number		1939-1237-ND
	Voltage		12V
	Maximum Power		60W
	Power Consumption	At rest (FPGA)	6.5W
In operation, at maximum laser power		7.7W	
Mechanical	Casing Material		Aluminum
	Baseline S variant		30mm
	Baseline M variant		50mm
	Baseline L variant		100mm

Prophesee

 74, rue du Faubourg Saint Antoine
 75012, Paris, France

www.prophesee.ai

Proprietary to PROPHESEE S.A.

1

	Dimensions (WxHxD) S & M variants	108mm x 70mm x 72mm
	Dimensions (WxHxD) L variant	158mm x 70mm x 72mm
	Weight S & M variants	555g
	Weight L variant	707g
	Attachment	Standard tripod screw (1/4-20 UNC)
Software	Custom Application development Solution	Prophesee Metavision® SDK (v4.4.0 onward)
	First Hands on experience	Prophesee EVK3D Explorer App
	Supported OS	Linux Ubuntu 20.04 and 22.04 Windows 10 64-bits.

Prophesee

74, rue du Faubourg Saint Antoine
 75012, Paris, France

www.prophesee.ai
 Proprietary to PROPHESÉE S.A.

CONTENTS

Overview	4
Specifications	6
Electrical Specifications.....	6
Mechanical specifications.....	6
Requirements.....	9
Electrical requirements.....	9
Environmental requirements.....	9
Software installation requirements:.....	9
Active Illumination system and Crosstalk.....	10
Active Lighting system.....	10
Projector spatial structure.....	10
Projector temporal modulation.....	12
Interfaces.....	12
USB interface.....	12
Synchronization signals	12
Master Mode	12
Slave Mode	13
Setup.....	13
Connection procedure.....	13
Softawre Setup.....	14
EVK3D Explorer.....	14
Metavision SDK.....	17
Calibration	17
Links and related information.....	18
Disclaimer	19
Copyright.....	19

OVERVIEW

PROPHESÉE EVK3D - SL Demo kit is an embedded 3D camera that enables evaluation of the SONY IMX636 TS HD stacked Event Based Vision sensor, co-developed with PROPHESÉE in the context of Structured Light depth measurement. Combined with a modulated Vertical Cavity Self Emitting Laser (VCSEL) projector source manufactured by LUMENTUM, it can generate point clouds at unprecedented speeds.

The LUMENTUM 8 channels addressable VCSEL array emits a highly efficient 940nm infrared dot pattern onto the scene at sub-millisecond periods, combined with the high speed capabilities of the IMX636 sensor, this match allows to capture depth information in highly dynamic scenes and challenging ambient light conditions.

This platform is compatible with Metavision SDK(v4.4 onward) [see here](#) to allow users to develop their application requiring fast point clouds. In addition to this SDK, we allow users to get a first experience of streaming the demo kit with EVK3DExplorer.

The embedded Xilinx Zynq Ultrascale+ 6EG platform processes the data sent by the sensor and encodes it into a point cloud format sent to the host via a SuperSpeed USB connection.

Trigger features allow both slave and master mode to permit multiple systems to operate in the same environment and help dealing with application-level control and cross talk mitigation.

The combination of the EB sensor and the projector allows depth measurement thanks to the principle of triangulation as depicted in the Figure 1.

The main components of the EVK3D-SL are described in the Figure 2, along with external interfaces and simplified internal connections.

1. Triangulation Principle

As depicted in Figure 1, the principle of triangulation present in a variety of depth measuring techniques, is also used in the EVK3D. One laser dot projected by the illuminator will be seen at a different pixel location on the sensor depending on the

Prophesee

depth of the object it encounters, This simple principle is illustrated in Figure 3. In our case the knowledge of mapping that allows to convert the pixel coordinate into depth for a given laser dot is obtained through calibration.

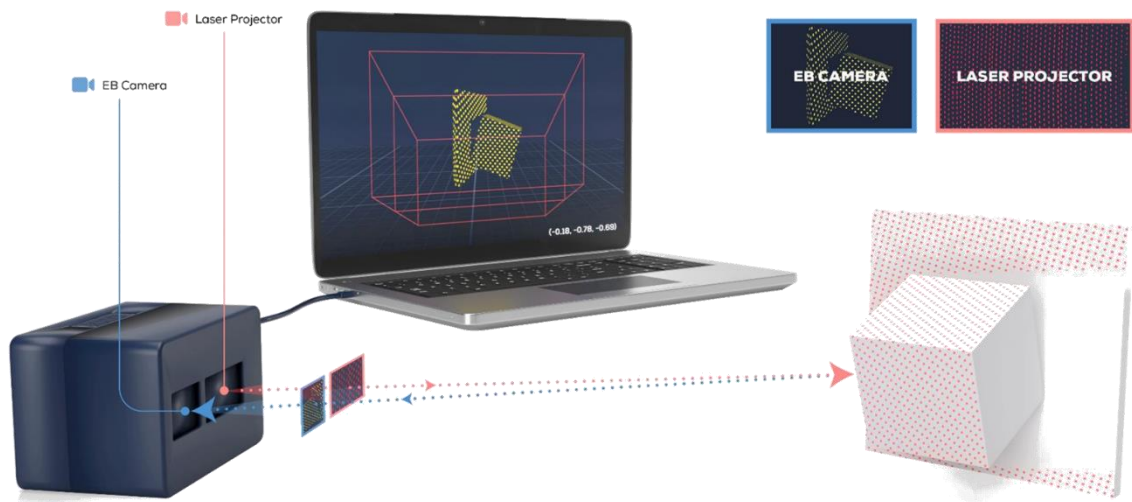


Figure 1: EVK3D SL Triangulation Principle

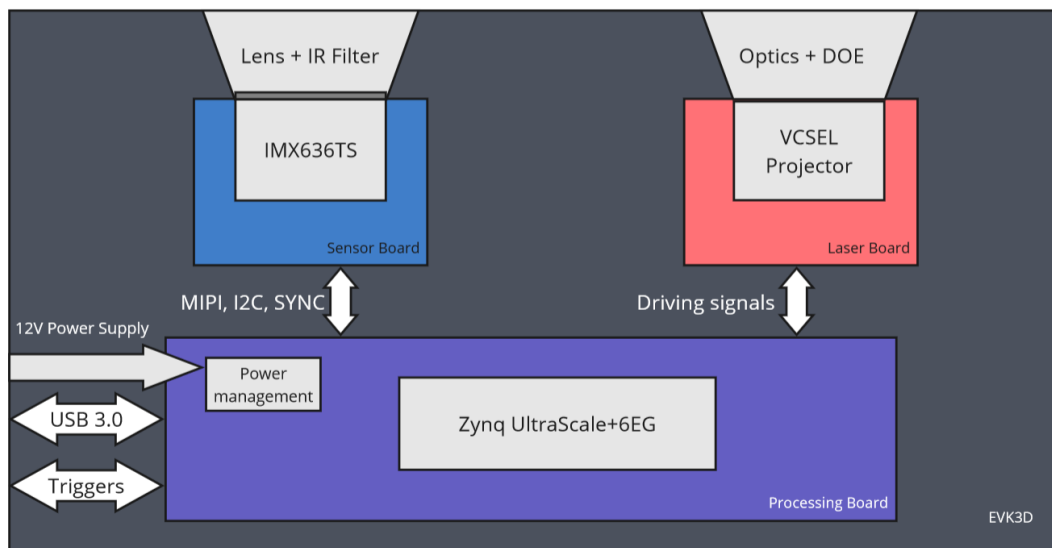


Figure 2 : EVK3D Simplified block Diagram

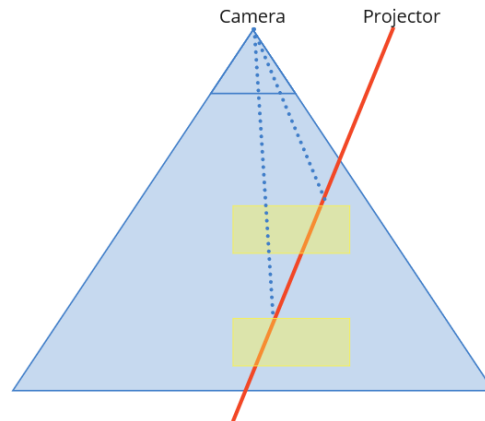


Figure 3 : Simplified view of triangulation principle: a laser dot coming from the laser hitting an object at different depths is seen at different pixels coordinates

SPECIFICATIONS

Electrical Specifications

The Main power supply (12V 60W) is provided with the kit.

		Min	Typ.	Max
Slave Mode	Input Low Voltage TRIG_IN			1.35V
	Input High Voltage TRIG_IN	2.8V@1.3mA	3.3V	9.0V
	Input Current TRIG_IN			10mA
Master Mode	Output Low Voltage TRIG_OUT			0.55V
	Output High Voltage TRIG_OUT	2.3V	3.3V	-
	Output Current TRIG_OUT		24mA	

Mechanical specifications

Prophesee

74, rue du Faubourg Saint Antoine
75012, Paris, France

www.prophesee.ai
Proprietary to PROPHESEE S.A.

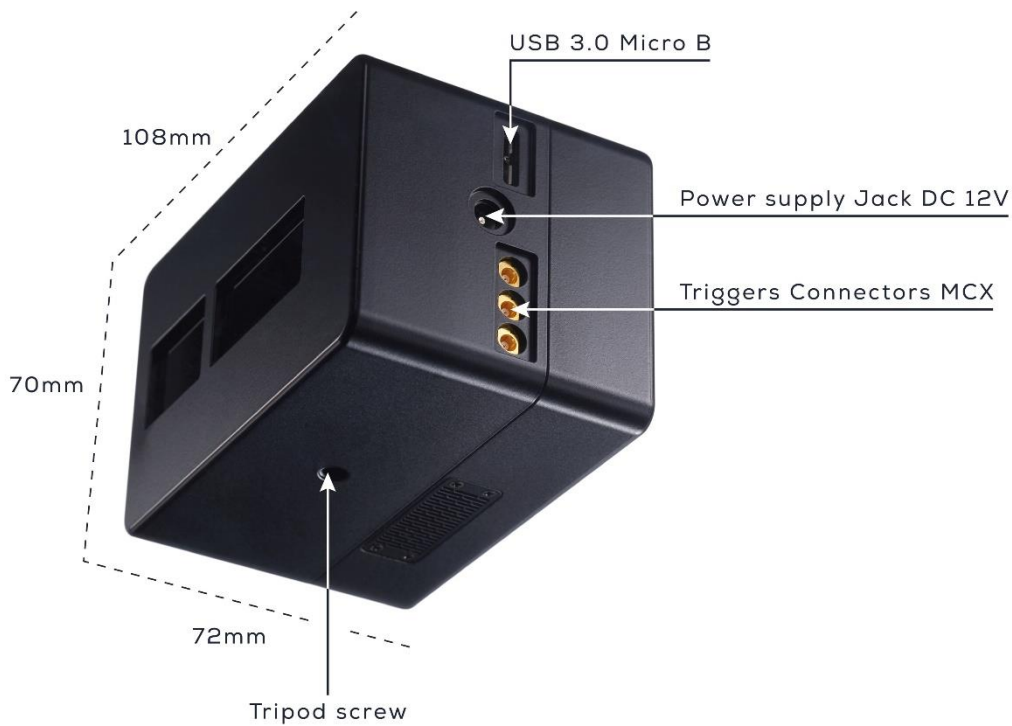


Figure 4 EVK3D Dimensions and Connection features

Prophesee EVK3D demo kit can be fixed via a tripod screw on the bottom face. All electrical interfaces are available on the lateral side. Three air vents ensure cooling of the device, it is recommended to let them unblocked. They are located on the top, bottom and back sides. In addition to air vents, an internal fan is located on the back side.

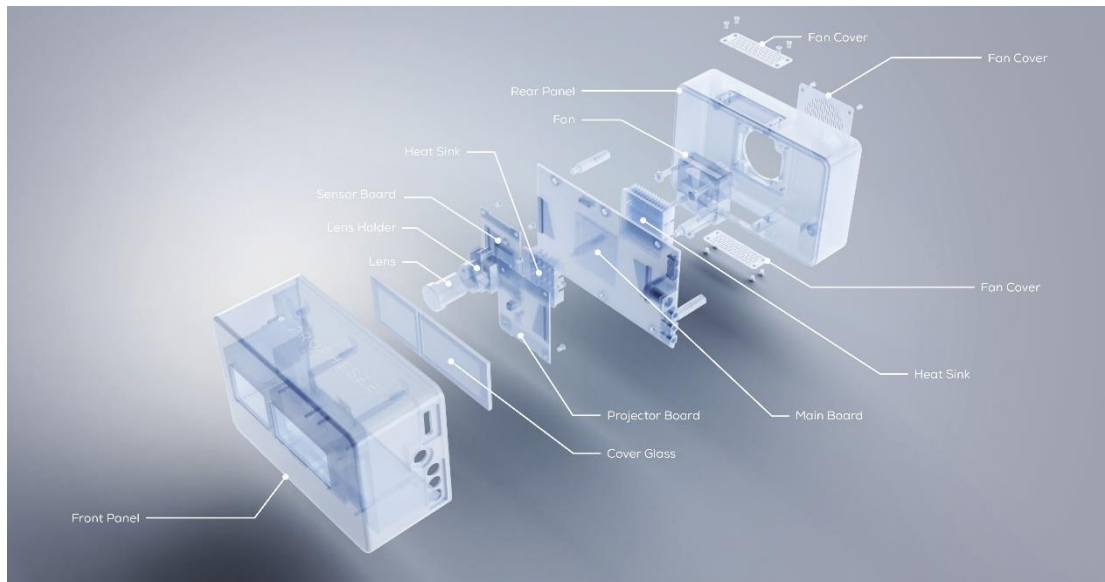


Figure 5 : Internal components of the EVK3D

REQUIREMENTS

Electrical requirements

The EVK4 is electrically powered with the 12V power supply provided.

The data transfer is handled by USB through the USB 3.0 microB connector to the host PC. The user must ensure the USB port of the host PC is USB 3.0 SuperSpeed compatible to provide the necessary communication bandwidth.

Environmental requirements

The camera has been designed to endure IEC certifications (T° / Heat / Shocks / Electrostatic discharge). The following table summarizes the certifications and operational ranges :

Environmental Specifications

Safety/Quality standard		CE EMC 2014/30/EU	
Complied standard Emission		EN61000-6-4:2007+A1:2011	
Immunity:		EN61000-6-2:2019	
RoHS		RoHS 2011/65/EU (EU)2015/863	
Eye-Safety		Class 1 Laser Certification : IEC 60825-1:2014; EN 60825-1:2014	
Durability	Vibration	Acceleration	: 98m/s ² (10G)
		Frequency	: 20 ~ 200Hz
		Direction	: X, Y, and Z 3 directions
		Testing time	: 120min for each direction
	Shock	No malfunction with 980m/s ² (100)G for ±X, ±Y, and ±Z 6 directions without packaging.	
Operational Conditions	Temperature	0 ~ +40°C	
	Humidity	20 ~ 80%RH with no condensation.	
Storage Conditions Storage	Temperature	-25 ~ +60°C	
	Humidity	20 ~ 80%RH with no condensation.	

Software installation requirements:

- For Linux, Administrator rights (sudo account)
- Internet access (to install dependencies)

Prophesee

The EVK3D can be operated via Prophesee Metavision® SDK. The software can be downloaded following the instructions at <https://www.prophesee.ai/metavision-intelligence-sdk-download/>.

Active Illumination system and Crosstalk.

The EVK3D is an active illumination system. It operates under the assumption that the only light source present in the 940nm wavelength is the VCSEL projector present on the EVK3D. Another light source emitting in this domain could interfere with a correct operation of the EVK3D. We recommend not exposing the device to another light source in this spectrum. If for functional reasons such constraint is impossible, there is a possibility to synchronize several devices to avoid interference.

ACTIVE LIGHTING SYSTEM

Projector spatial structure

The Lumentum projector used in the EVK3D is comprised of 8 channels driven separately, each channel covers a different portion of the field of illumination.

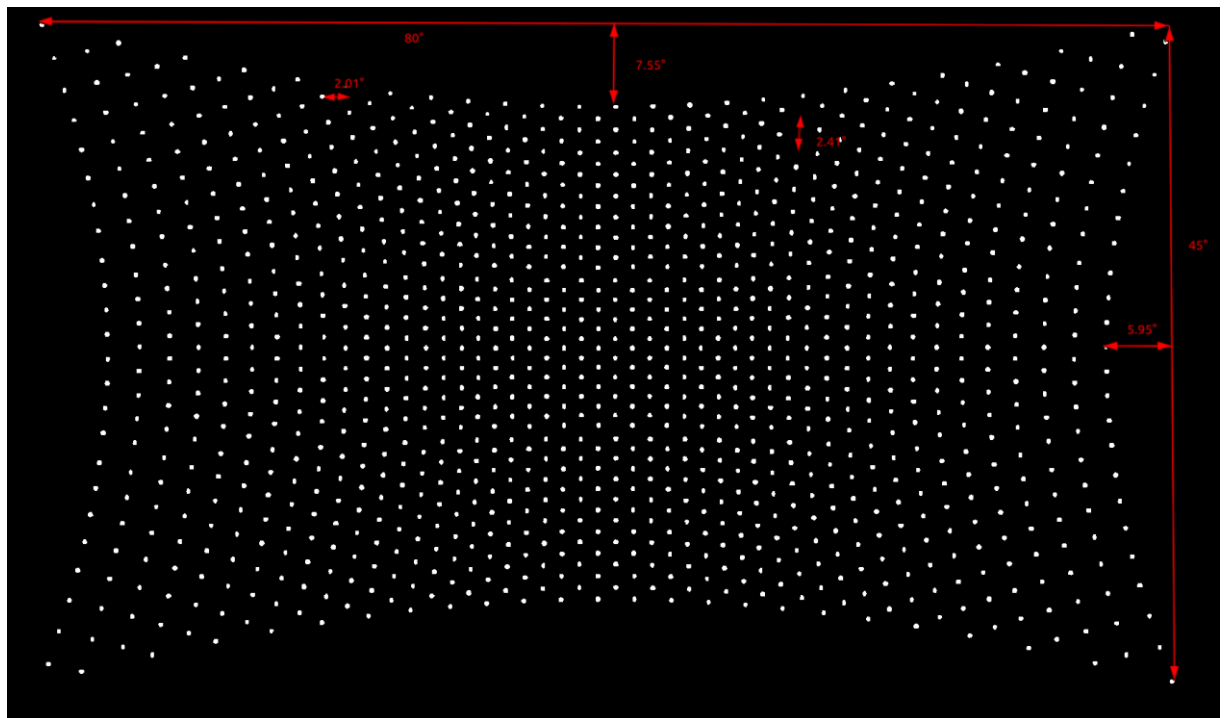


Figure 6: Full Dot pattern : 1152 dots distributed on 48 columns of 24 dots. Projection on a flat plane.

The channels are distributed into 3 horizontal repetitions (or doublets) of 2 columns. One channel, when turned on, lights up $3 \times 2 \times 44 = 144$ dots.

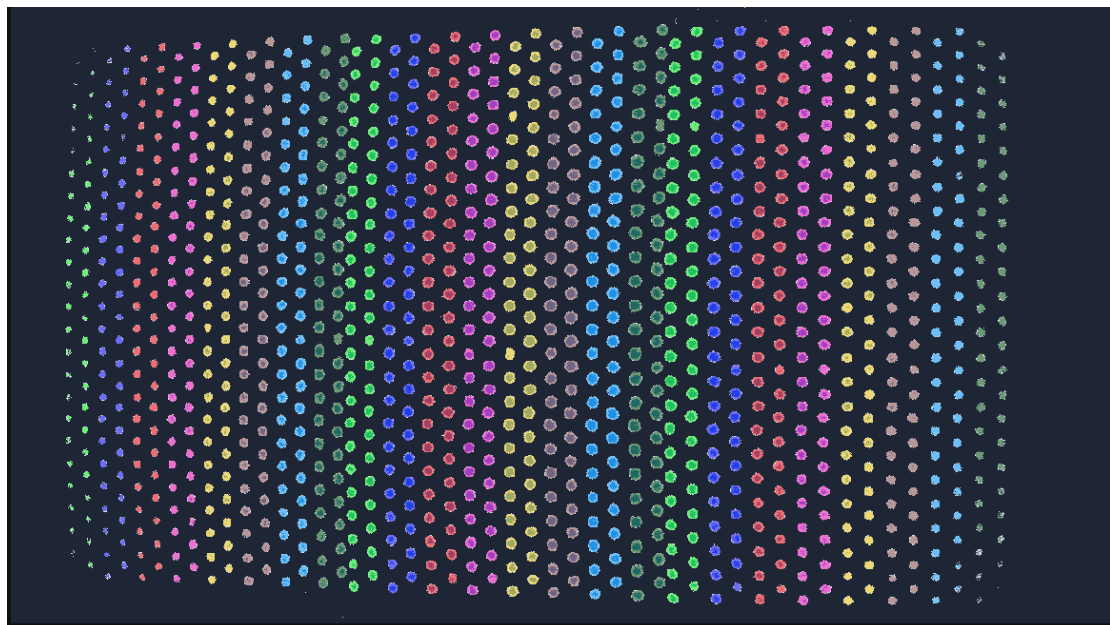


Figure 7 Pattern hitting a flat plane, seen by the IMX636 sensor for an EVK3D 30mm. Each color corresponds to a different projector channel.

Prophesee

74, rue du Faubourg Saint Antoine
75012, Paris, France

www.prophesee.ai
Proprietary to PROPHESÉE S.A.

Projector temporal modulation

Each Channel is modulated in time, once a channel modulation is transmitted, the next channel transmission begins and so on. A full point cloud is generated after all the 8 channels have cycled.

The frequency f_{PC} which a point cloud is generated (in Master Mode) is directly linked to the channel period T_c parameter:

$$f_{PC} = \frac{1}{2 * 8 * T_c}$$

The user can choose the point cloud frequency (indirectly the channel period) as well as the peak power of each channel.

It was chosen to maintain a constant channel duty cycle when the point cloud frequency changes. This allows to have a constant mean power consumption. In other words, when the point cloud is faster, the laser will be on less time, thus less energy will be sent for each channel at iso-peak power. It results in an increased probability for a pixel to detect the laser with slower point clouds.

INTERFACES

USB interface

The EVK3D is equipped with a USB Type-3.0 - microB connector. It is compliant with USB 3.0 specification 1.0.

Synchronization signals

The EVK3D provides dedicated interfaces for multi-sensor synchronization with compatible hardware. Two synchronization modes are available to synchronize the EVK3D with other devices.

Master Mode

Prophesee

In master mode, the EVK3D generates point clouds according to the settings it is configured in and outputs a pulse on the TRIG_OUT connector at the beginning of each new point cloud. The width of the pulse can be set.

Slave Mode

In Slave Mode, the EVK3D will generate a new point cloud when it receives a pulse on the TRIG_IN input. As soon as a pulse is received, the light pattern starts.

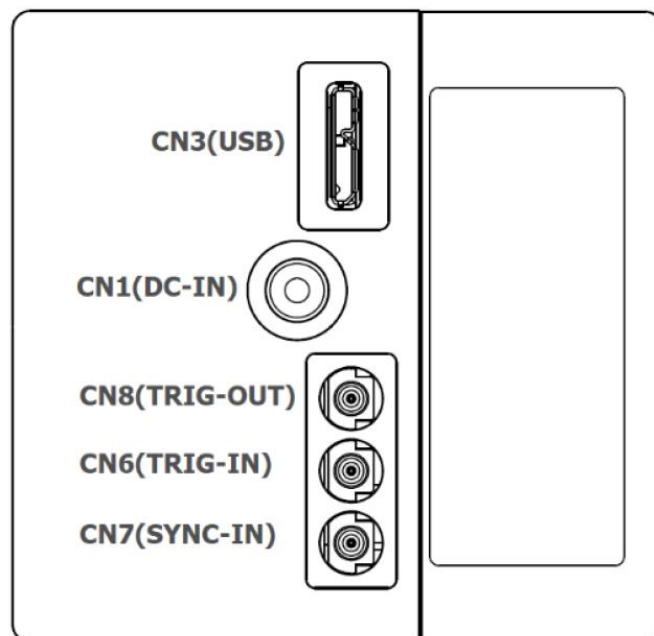


Figure 8 : External Connectors Pin Assignment

SETUP

Connection procedure

First connect potential trigger connectors in case the EVK3D is used in a Synchronized mode (Slave or Master).

Prophesee

74, rue du Faubourg Saint Antoine
75012, Paris, France

www.prophesee.ai
Proprietary to PROPHESEE S.A.

Then connect the power supply provided.

Finally connect the USB cable to the host. We strongly recommend connecting the A side first, then the microB side. This will reduce risks of enumerating the device in USB2.0 instead of USB3.0.

Software Setup

There are two solutions to have a first experience with the EVK3D Demo kit : with the EVK3D Explorer App available on the Knowledge Center : <https://support.prophesee.ai/portal/en/kb/articles/evk3d-assets>. Or with the *metavision_evk3d_viewer* sample available in Metavision SDK (v4.4.0 onward) described here : https://docs.prophesee.ai/stable/samples/modules/driver/evk3d_viewer.html

EVK3D Explorer

After having downloaded the zip, unzip it, open a terminal in its location and execute the following command :

On Linux (Ubuntu 20 or 22) :

```
$/launch.sh -b resources/sl.bias --calib path/to/calibration_file.json
```

On Windows (with Power Shell) :

```
> .\launch.bat -b resources\sl.bias --calib path\to\calibration_file.json
```

Prophesee

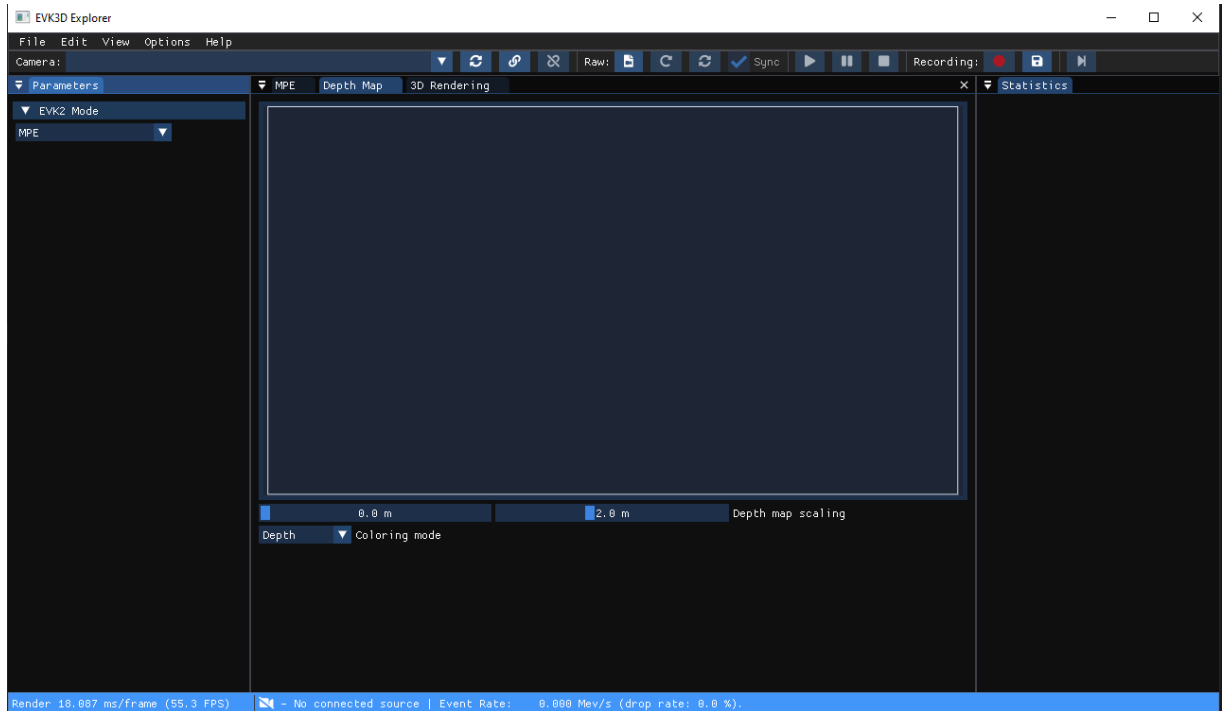


Figure 9 EVK3D Explorer Appearance at start

In order to enable connection with the plugged EVK3D, check that the camera is detected, it is when a the full device name appears in the Camera name bar.

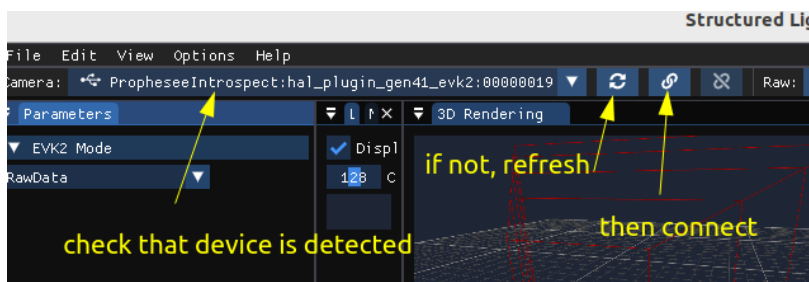


Figure 10 Connection procedure

Then select **MTRPixel** mode :



And finally press the “**Open Selected Source**”  button.

After a few seconds (time needed to transfer calibration data to the camera), focus will be back to the main window.

Then in the **Projector Control** widget, you can set two parameters:

Prophesee

74, rue du Faubourg Saint Antoine
75012, Paris, France

www.prophesee.ai
Proprietary to PROPHESÉE S.A.

- **Point cloud rate (Hz)**
- **Laser Power**

Once the parameters are set, you can **Enable Projection**.

The laser power is expressed in an arbitrary unit which represents the portion of maximum peak power the laser drivers should deliver. When set to 1023, the drivers will operate at their maximum peak power.

It is allowed to change the Laser Power and Point cloud rate dynamically while projecting. As soon as the **Enable Projection** checkbox is ticked, a Depth Map appears in the **Depth Map** tab and a Point Cloud appears in the **3D Rendering** tab.

Figure 11 shows an example of a point cloud rendered in the 3D view and Figure 12 shows a similar scene in the depth map view.

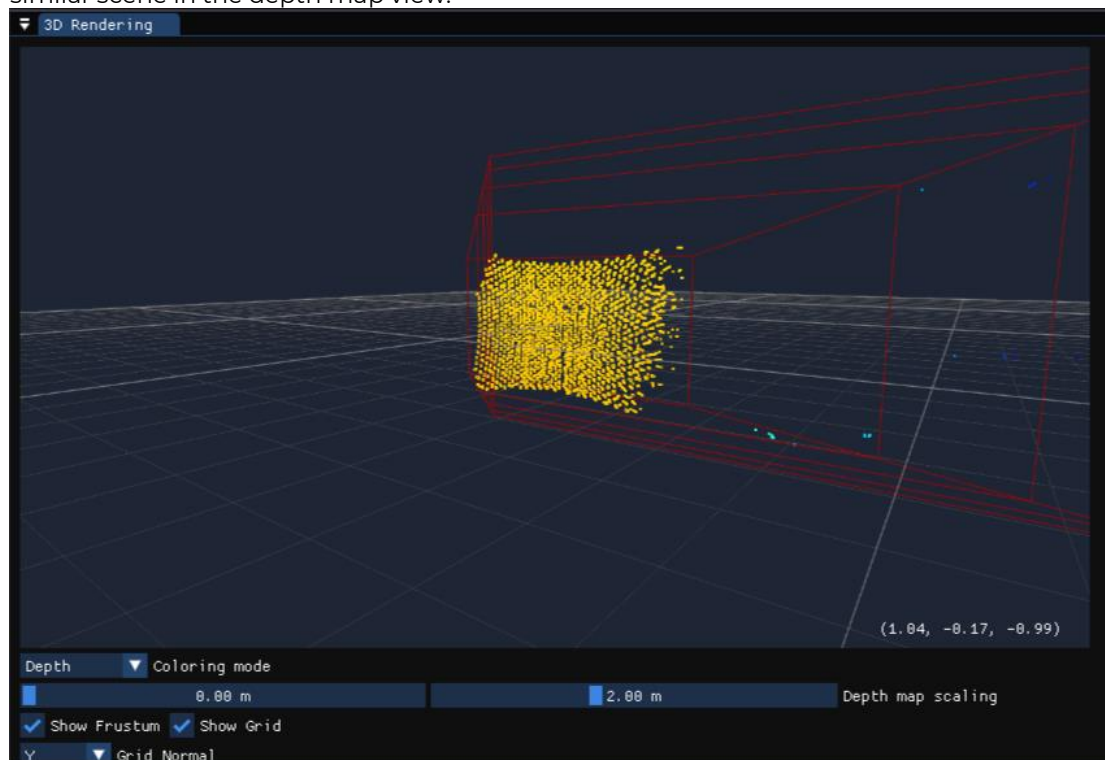


Figure 11 3D Rendering view example : a plane in front of the EVK3D

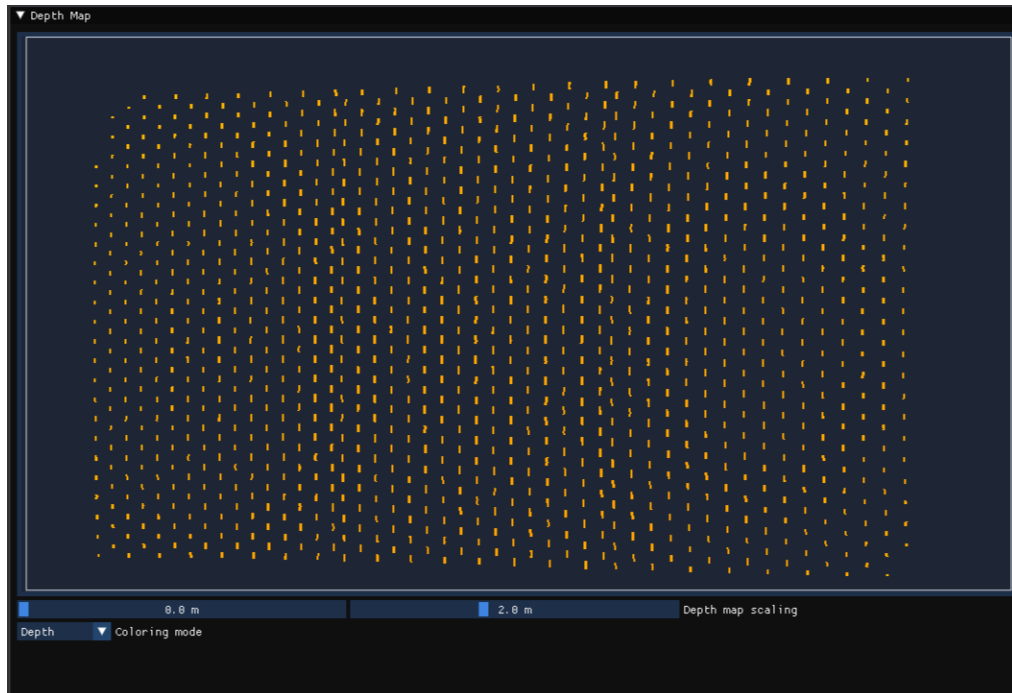


Figure 12 Depth Map rendering example : a plane in front of the EVK3D

Metavision SDK

The Metavision SDK (from v4.4.0) supports plugins for the EVK3D demo kit. It is ideal to develop a custom application using fast point clouds.

The sample `evk3_viewer_sample` provides a minimal example of a

CALIBRATION

Each EVK3D is calibrated at manufacturing. The calibration file must be retrieved by the user. Details on how to retrieve the calibration file are provided here :

<https://support.prophesee.ai/portal/en/kb/articles/evk3d-assets>

LINKS AND RELATED INFORMATION

Knowledge Center space dedicated to EVK3D Demo kit :

<https://support.prophesee.ai/portal/en/kb/prophesee-1/metavision-sensing/evaluation-kits/evk3d>

Metavision® SDK can be downloaded following the instructions at <https://www.prophesee.ai/metavision-intelligence-sdk-download/> Metavision®

documentation is available online at <https://docs.prophesee.ai/stable/index.html>

Product information and support is available at <https://support.prophesee.ai/>

Prophesee Development Center is community page where Engineers and Researchers can share EB projects, resources, news update and more:

<https://www.prophesee.ai/development-center/>

Prophesee

74, rue du Faubourg Saint Antoine
75012, Paris, France

www.prophesee.ai
Proprietary to PROPHESÉE S.A.

NO WARRANTY

THE EVK3D DEMO KIT IS AVAILABLE "AS-IS"

THE EVK3D DEMO KIT IS PROVIDED "AS IS", AND TO THE FULLEST EXTENT PERMITTED BY LAW, NEITHER PROPHESÉE, ITS AFFILIATES, LICENSORS, NOR SUPPLIERS, MAKE ANY WARRANTY OF ANY KIND, WHETHER EXPRESS, IMPLIED, STATUTORY OR OTHERWISE.

THE EVK3D DEMO KIT IS MEANT FOR EVALUATION OF AN EVENT BASED STRUCTURED LIGHT DEPTH SENSING SOLUTION. THE EVK3D DEMO KIT IS NOT A CUSTOMER GRADE PRODUCT AND AS SUCH, HAS NOT BEEN QUALIFIED AND CHARACTERIZED EXTENSIVELY.

PROPHESÉE DOES NOT GUARANTEE A RIGOROUSLY IDENTICAL BEHAVIOR FROM PART TO PART AND THE INFORMATION PROVIDED IN THIS CAMERA MANUAL MIGHT NOT ALWAYS BE EXACTLY APPROPRIATE FOR A SPECIFIC DEVICE. POWER CONSUMPTION, DEPTH QUALITY AND RANGE MEASUREMENTS, FOR INSTANCE, WERE PERFORMED ON A REDUCED SET OF PARTS AND NOT SYSTEMATICALLY ON ALL SHIPPED KITS.

PROPHESÉE DOES NOT REPRESENT THAT CUSTOMER'S USE OF THE PRODUCT WILL BE SECURE, UNINTERRUPTED OR ERROR FREE. PROPHESÉE IS NOT RESPONSIBLE FOR THE ACCURACY, COMPLETENESS, APPROPRIATENESS, OR LEGALITY OF THE INFORMATION YOU GET WHEN USING THE PRODUCT.

COPYRIGHT

All rights reserved © 2023, Prophesee.

This document contains proprietary information of Prophesee S.A. This document is not to be copied in whole or part, disclosed or otherwise disseminated to any third parties without the prior written acceptance of a duly authorized representative of Prophesee S.A. The information and data is provided for internal evaluation only and as supportive tool for Prophesee's partners to facilitate the use of the Prophesee event-based vision sensor Products. They are provided on an "as is" basis and Prophesee disclaims all representations, warranties, and conditions with respect thereto, whether express, implied or statutory, including without limitation any warranties of merchantability, fitness for a particular purpose, title, non-infringement of third-party rights, quiet enjoyment, and accuracy. In no event shall Prophesee be liable for any incidental, consequential, indirect, special or punitive damages of any kind, including loss of profit or revenue, loss of business, cost of removal, reinstallation, recovery, recall, replacement of goods, ancillary costs for procurement of substitute products, retesting, labor costs,

Prophesee

loss of data or for any other loss resulting from the use, installation, maintenance, performance, failure or interruption of the so provided information and data, or from delays in delivery or the inability to deliver (however caused and under any theory of liability), even if Prophesee has been advised of the possibility of such damages. In no event Prophesee's aggregate liability for all claims of any kind arising out of or in connection with a contract, the so provided information and data (whether asserted as a tort claim, a contract claim, or otherwise) shall exceed the amounts paid by client to Prophesee for the sensor Product purchased and paid by the customer pursuant to such contract.

Prophesee

74, rue du Faubourg Saint Antoine
75012, Paris, France

www.prophesee.ai
Proprietary to PROPHESÉE S.A.